

Upgrading the generator

This section provides procedures for upgrading a generator using the PCMCIA card and executing a Restore.

This upgrade procedure requires that you put the System and Library directories for the new Release on the PC card. You can accomplish this either by downloading the release files and putting them on the PC card with your PC or by transferring the release files to the PC card with the PC card in the generator slot. If you do not have a PC card reader available on your PC or a PC card reader device that you can connect to your PC, you will have to place the release directories on the PC card by using the 882 FTP Browser. This requires that you put the PC card in the generator's slot and then transfer the files to the PC card.

Follow this procedure to clone a generator using the PC card.

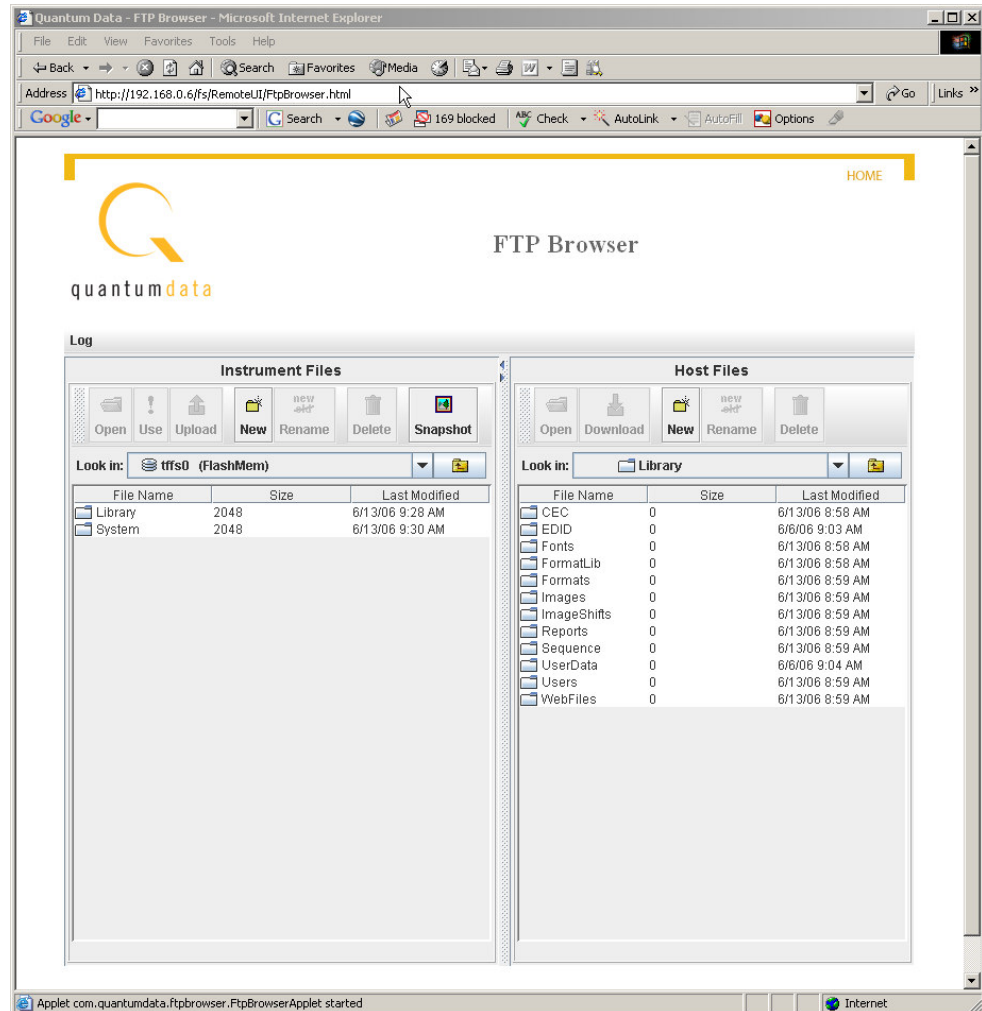
To upgrade a generator using the PC card:

1. Download the new release from the Quantum Data download page
<http://www.quantumdata.com/downloads/index.asp>.
2. If you have a PCMCIA slot accessible with your PC, perform the following steps. Note that you can skip the procedure in Step 3 below if you are performing the following steps:
 - a. Insert the PC card into the computer's PCMCIA slot or the external device.
 - b. Transfer the System and Library directories from the new Release to the PC card.

Note: Make sure there are no files on the PC card.

- c. Insert the PC card into the generator's card slot.
3. If your PC does not have access to a PCMCIA slot or device, use the following procedure. If you have performed the procedure in Step 2 above, you can skip the following procedure.
 - a. Insert the PC card into the generator's card slot.
 - b. Access the generator's FTP browser by choosing the **FTP Browser** menu item from the main web page. The Generator FTP Browser appears. The Instrument

Files area shows the files stored on the generator. The **Host Files** area shows the files stored on the PC.



- c. In the **Host Files** area, locate and select the System and Library and directories from the new release that you want to copy.
- d. In the **Instrument Files** area, set the destination folder to the PC card. Select **card0** for the generator's PC card.

Note: Make sure there are no files on the PC card.

- e. In the **Host Files** area, click **Download**. The **Transfer Files** dialog box appears.
- f. Verify that the source file or folder and the destination folder are correct, and then click **OK**.
- g. The **Copying Files** dialog box appears showing the status of the operation. When the status is 100%, click **Done**.

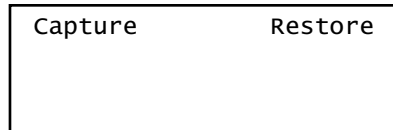
4. Press the **Tools** key. The Tools menu appears on the generator's display as shown below.



5. Choose the **System** item by pressing the adjacent soft key. The System menu appears on the generator's display as shown below.



6. Choose the **Clone** item by pressing the adjacent soft key. The Clone menu appears on the generator's display as shown below.



7. Choose the **Restore** item by pressing the adjacent soft key.

Note: The contents on the flash memory are replaced by the contents on the PC card.

You will be prompted to confirm the restore.

8. Restart the generator while booting from flash memory.

