



882EA APPLICATION NOTE – HDBaseT™ COMPLIANCE TESTING

HDBaseT enables a single LAN cable to replace multiple HDMI cables and connectors in the home entertainment and business environment.

The HDBaseT Alliance has defined a procedure for Alliance Members to use the logo on their products and product collateral to indicate recognition of Compliant Products to the HDBaseT 1.0 Specification.

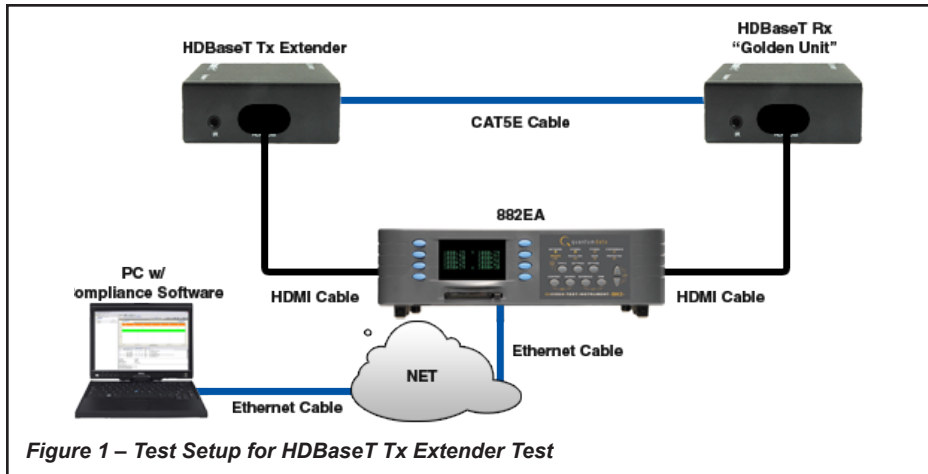


QUANTUM DATA 882EA – SOLUTION FOR COMPLIANCE TESTING OF HDBaseT DEVICES

The Quantum Data 882EA is a workhorse in the business of providing compliance solutions for HDMI. The 882EA provides industry approved compliance solutions for HDMI CEC, HDCP and EDID. The 882EA's support for compliance testing of HDBaseT devices continues on in that tradition by providing approved compliance test solutions for HDBaseT Extender Tx, Extender Rx, Source and Sink devices in accordance the HDBaseT compliance test specification.

VERIFYING COMPLIANCE FOR HDBaseT TX EXTENDER DEVICES

When testing an HDBaseT Tx Extender device the Quantum Data 882EA serves as both a reference source and a reference sink as depicted in Figure 1 below. The 882EA issues the appropriate commands and analyzes the HDMI stream to verify compliance.

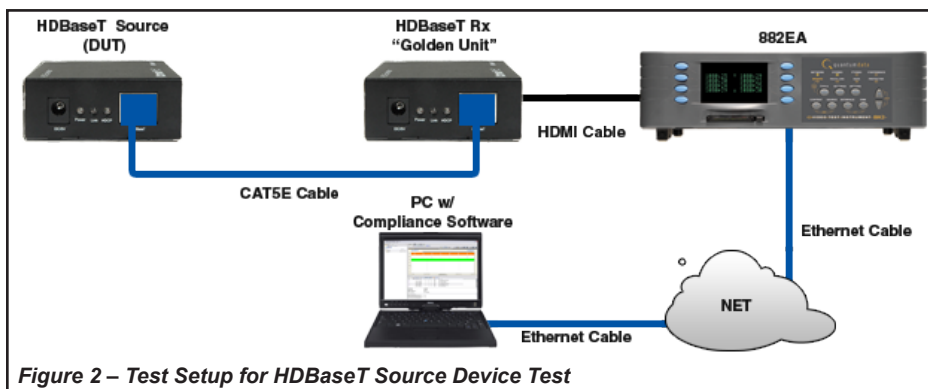


The following tests for HDBaseT Rx Extenders are supported:

- Test 3.3.1.1 – HDMI Video format timing
- Test 3.3.1.2 – Video data reliability
- Test 3.3.1.3 – 5V
- Test 3.3.1.4 – EDID
- Test 3.3.1.5 – HDCP
- Test 3.3.1.6 – CEC

VERIFYING COMPLIANCE FOR HDBaseT SOURCE HDMI OVER HDBaseT DEVICES

When testing an HDBaseT Source device the Quantum Data 882EA serves as a reference sink as depicted in Figure 2 below. The 882EA analyzes the HDMI stream and verifies compliance.

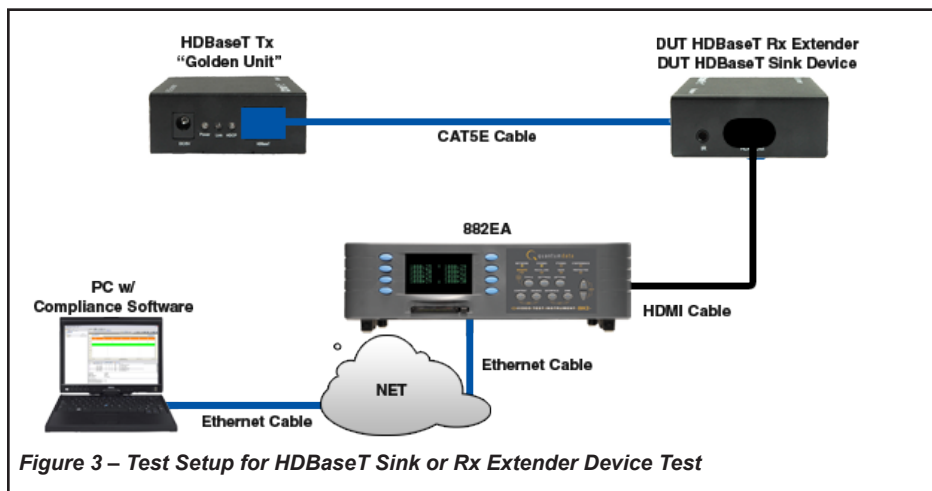


The following tests for HDBaseT source devices are supported:

- Test 3.3.2.1 – HDMI Video format timing
- Test 3.3.2.2 – Video data reliability
- Test 3.3.2.3 – 5V
- Test 3.3.2.4 – EDID
- Test 3.3.2.5 – HDCP
- Test 3.3.2.6 – CEC

VERIFYING COMPLIANCE FOR HDBaseT SINK DEVICE OR RX EXTENDER

When testing an HDBaseT Sink devices or Rx Extenders, the Quantum Data 882EA serves as a reference HDMI source as depicted in Figure 3 below. The 882EA issues the command to test for compliance.

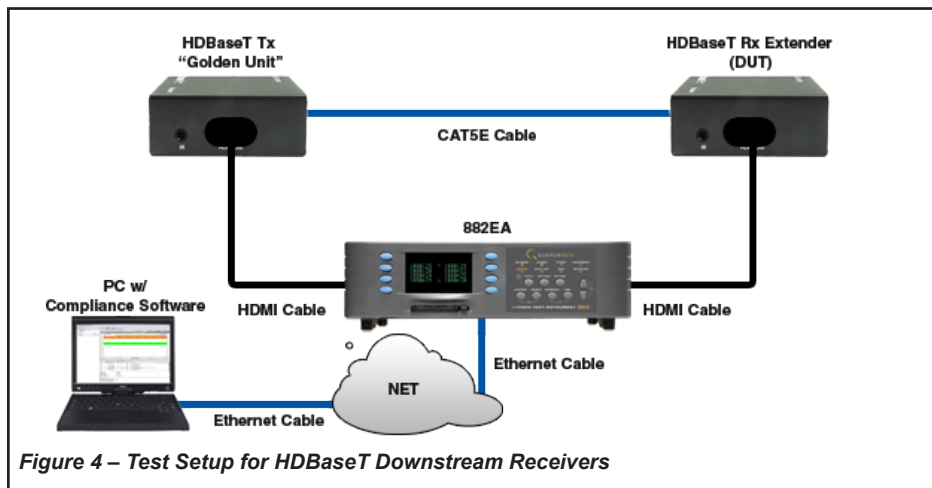


The following tests for HDBaseT Sink or Rx Extenders are supported:

- Test 4.2.1.1 - HDBaseT Sink or Rx Extenders

VERIFYING COMPLIANCE FOR HDBaseT RX EXTENDER DEVICE

When testing an HDBaseT Rx Extender device the Quantum Data 882EA serves as both a reference HDMI source and a reference sink as depicted in Figure 4 below. The 882EA issues the appropriate commands and analyzer the HDMI stream to verify compliance.

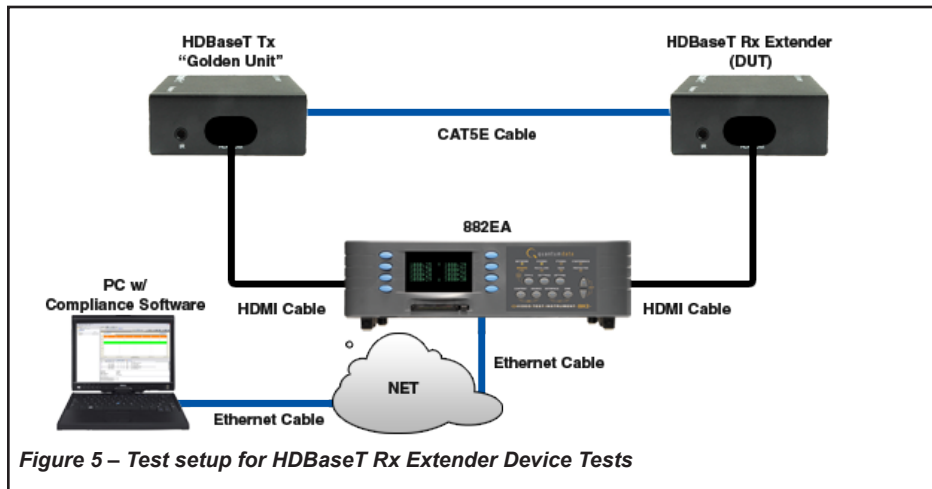


The following tests for HDBaseT Downstream Receiver are supported:

- Test 4.2.2.1 - HDBaseT Downstream Receiver

VERIFYING COMPLIANCE FOR HDBASET RX EXTENDER DEVICE HDMI TESTS

When testing an HDBaseT Rx Extender device the Quantum Data 882EA serves as both a reference HDMI source and a reference sink as depicted in Figure 5 below. The 882EA issues the appropriate command and analyzer the HDMI stream.

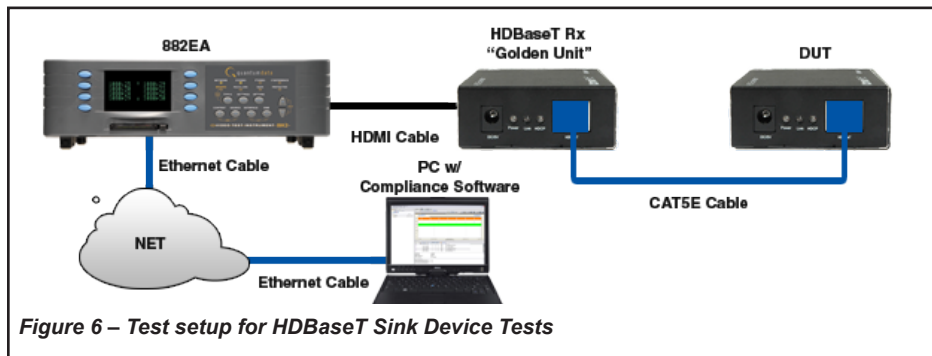


The following tests for HDBaseT Rx Extender devices are supported:

- Test 4.3.1.1 – HDMI Video format timing
- Test 4.3.1.2 – Video data reliability test
- Test 4.3.1.3 – HPD
- Test 4.3.1.4 – EDID
- Test 4.3.1.5 – HDCP
- Test 4.3.1.6 – CEC

VERIFYING COMPLIANCE FOR HDBASET SINK DEVICES

When testing an HDBaseT Sink device the Quantum Data 882EA serves as a reference HDMI source as depicted in Figure 6 below. The 882EA issues the appropriate commands to test for compliance.



- Test 4.3.2.1 – HDMI Video format timing
- Test 4.3.2.2 – HPD
- Test 4.3.2.3 – EDID
- Test 4.3.2.4 – HDCP
- Test 4.3.2.5 – CEC